




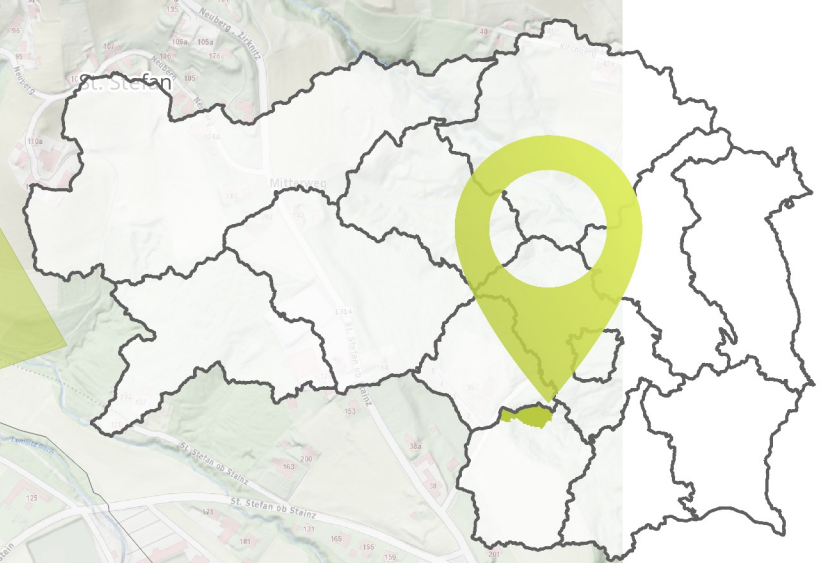
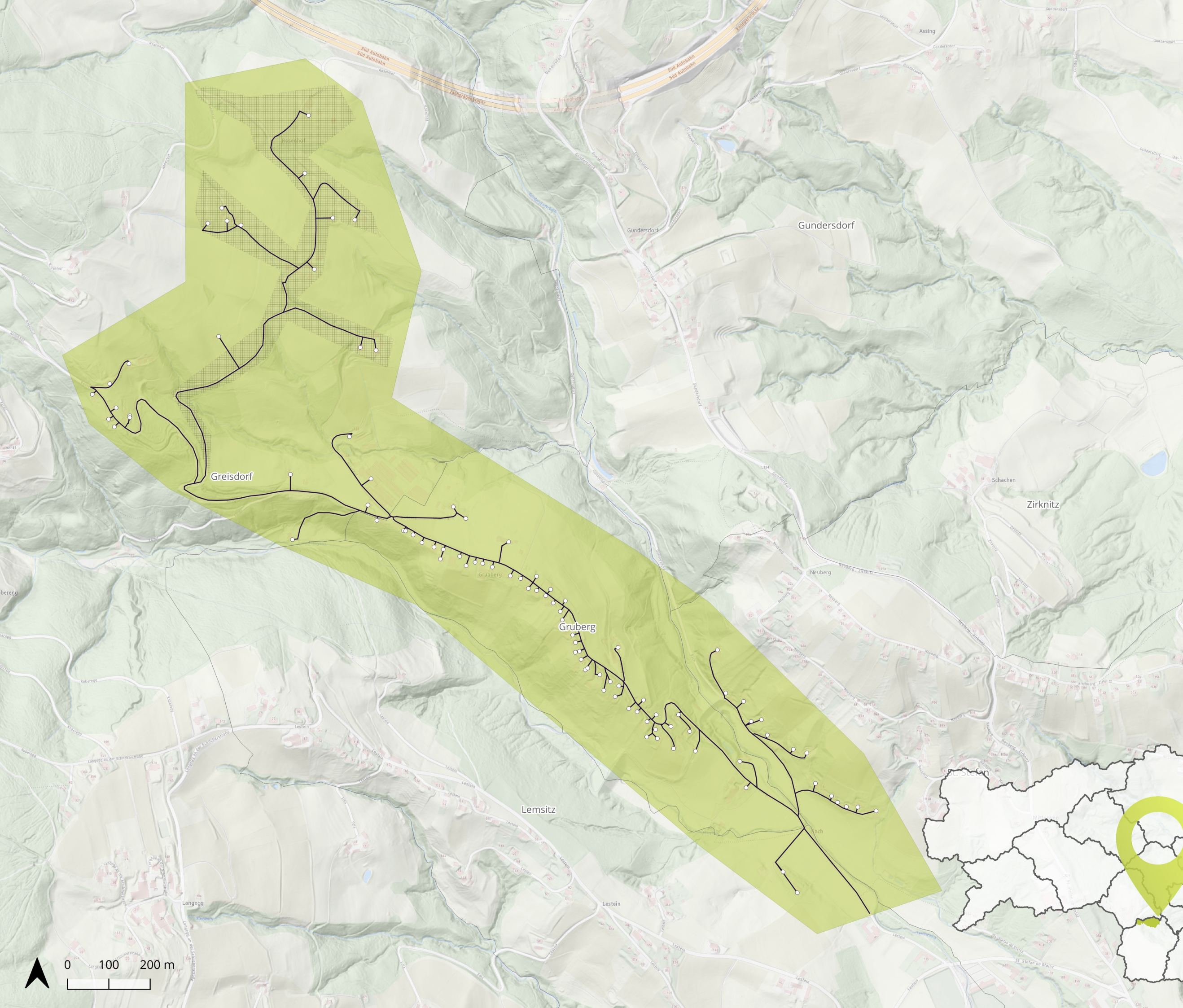


Glasfaser vernetzt
mit der Zukunft

Ausbaugesbiet **St. Stefan ob Stainz - Grubberg**

-  Gebäude
-  Trasse
-  Ausbaucuster
-  Mitverlegung
Vorderer Rosenhofweg
-  Katastralgemeindengrenze



Koordinatensystem
WGS 84, EPSG: 3857

Kartenerstellung
16.04.2024

Datenquellen
sbidi, basemap